

The ROCKWOOL Group rising to the challenge

1 1 MILLION
As people move to urban environments each week...



...the challenge of maintaining comfortable, healthy and safe cities becomes even more **urgent**

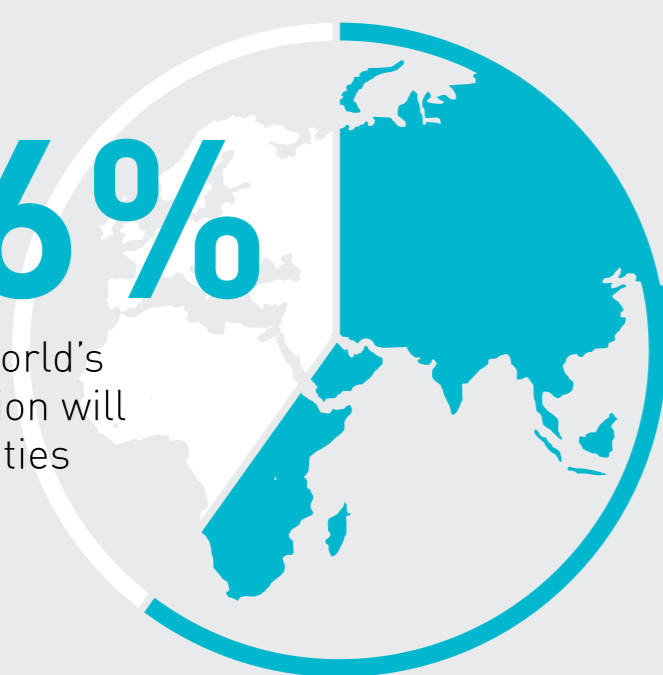
2 By 2030 the UN projects the world will have



41
mega-cities with **10 million** inhabitants

3 By 2050

66%
of the world's population will live in cities



This urban population will need

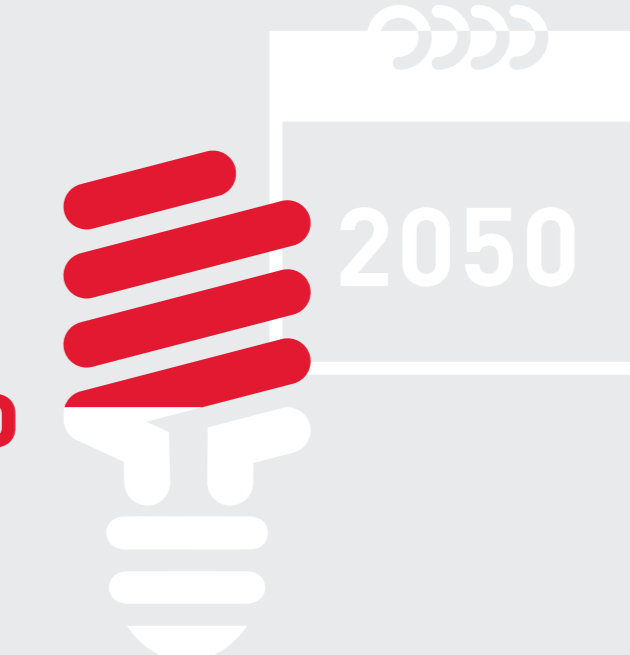
+17%
more water



+50%
more food

4 If no action is taken, energy consumption is expected to rise by **50% in 2050**

+50%



5 In addition to energy, to live comfortably we need to consider **noise pollution**



More than

30%

of Europeans' sleep is currently disturbed

6 and **building safety:**

>50%

of Europeans who lose their lives in fires die from the impacts of smoke and toxic gases

7 and **waste:**

The building and construction industry accounts for

35%

of total waste generated globally

To address these challenges the UN has identified **17 Sustainable Development Goals:**



The ROCKWOOL Group actively contributes towards achieving

9 of the 17 goals

We are committed to these goals by 2030:

Health, Safety and Wellbeing:

- Driving a zero accident culture

10% reduction in LTI per year **0** fatalities per year

CO₂ Emissions and Energy:

- Reduce CO₂ from factories (t CO₂/t Wool)

10% by 2022 **20%** by 2030

- Improve energy efficiency in own (non-renovated) building stock kWh/m²

35% Savings by 2022 **75%** Savings by 2030

Water Management:

- Reduce water consumption in factories (m³/t Wool)

10% by 2022 **20%** by 2030

Circular Economy:

- Increase the number of countries where we offer reclaiming of products from the market

15 countries by 2022 **30** countries by 2030

- Reduce landfill waste

40% by 2022 **85%** by 2030

Additionally we contribute to:

Energy and CO₂ savings
ROCKWOOL products save **80-1,500** times CO₂ emissions throughout their lifespan

Durability and consistent lifetime performance
Thermal resistance, dimension and form stability

Fire resilience
Non-combustible and withstands temperatures of at least **1,000°C**

Health, safety and wellbeing
Noise reduction achieved from ROCKWOOL insulation and ROCKFON ceilings improves sleep, learning and work efficiency

Urban water management
ROCKWOOL products actively clean and absorb water

Food production
Growing fresh tomato crops in GRODAN stone wool systems compared to soil uses **50% less** water per kilogram of crop produced

Circularity
The Earth produces **38,000** times more stone material than is used to make ROCKWOOL stone wool annually.

We release the natural power of stone to enrich modern living